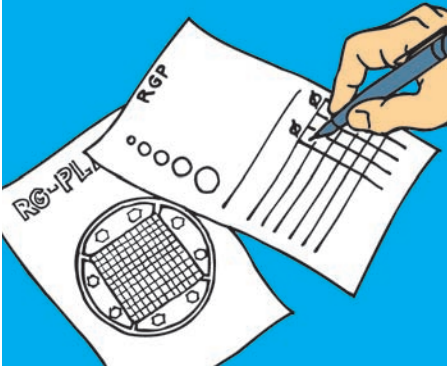
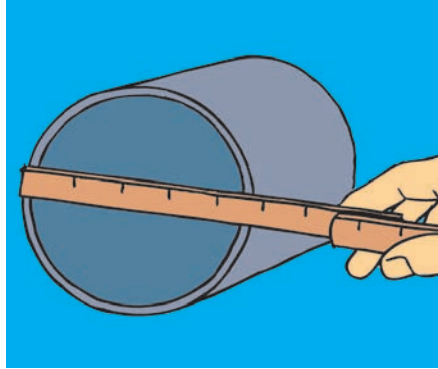


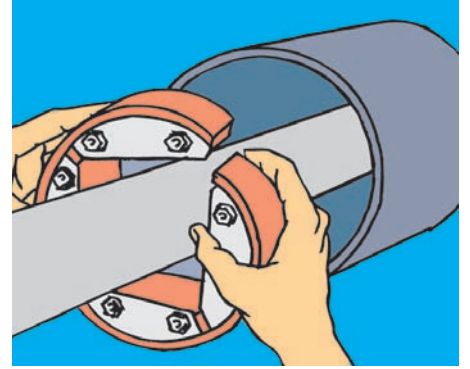
Installation Guide



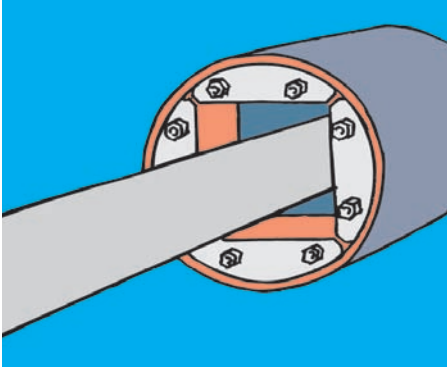
1 Use an RGP plan and enter the outer diameter and position of the pipe.



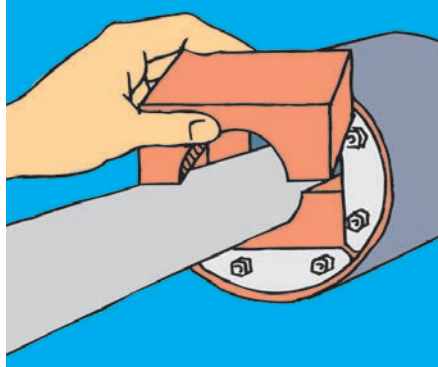
2 Measure the inner dimension of the pipe sleeve and check that the measures are within given tolerances.



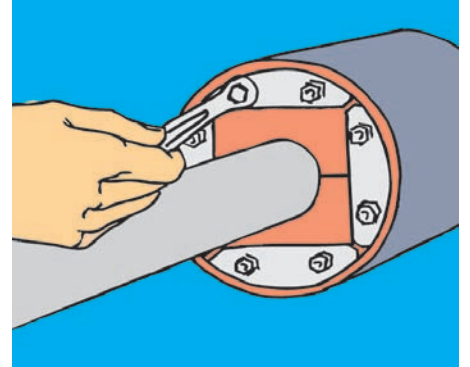
3 Pass the pipe through the sleeve and RGP plug or use an open RGPO plug if the pipe is already drawn. NB. The pipe must not be clamped in place as it must be possible to position it in the centre of the penetration.



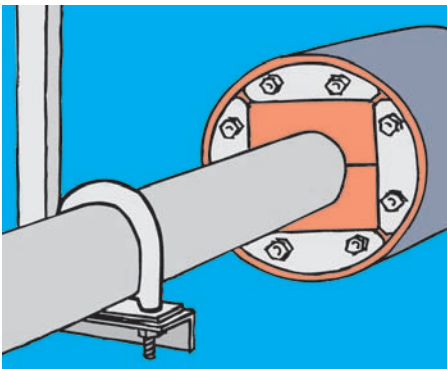
4 Insert the RGP-plug into the sleeve.



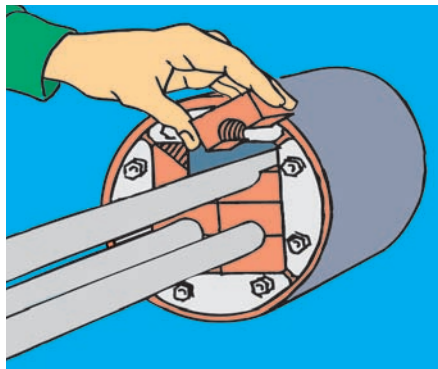
5 Fitting one centred pipe: fit the insert blocks around the pipe and press them into the RGP plug. For pressure-tight installation, see link.



6 Tighten the bolts to compress and complete the seal. Approximately 10-12 mm should protrude on each bolt.



7 Clamp the pipe in place. The pipe penetration is now fire-, gas- and watertight.



8 Fitting several pipes: pass the pipes through the penetration and seal each pipe with insert blocks of the right size. Any remaining space should be filled with solid spare blocks.